

LB 13 KE

Hydraulic 2 station machine for notching and coping

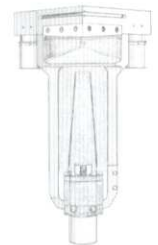
The *LB 13 KE* is a machine which distinguishes itself from the basic model by a second work station.

Station 1

Notching with a fixed angle of 90°, other features as for *LB 13 Standard*.

TRI-GIDE®

The patented Boschert 3 point ram guidance gives the machines their famous precision and durability

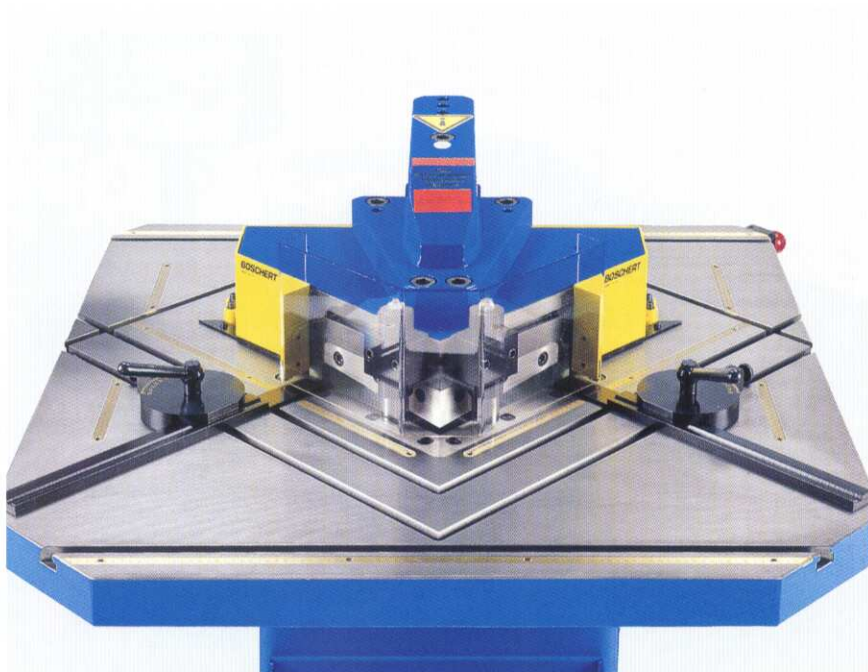
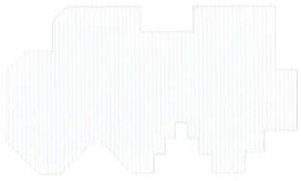


Station 2

Coping to a depth of 100 mm, 25 mm wide (Resetting of width as desired).
St 40: 4 mm thick, special steel: 3 mm

The standard equipment contains:

Locking precision stop with stop rails, stripper, stripe cutter, device for notching amplifications of more than 225 mm, freely moveable foot pedal for triggering the stroke, two holding-down clamps for sheet metal and plexiglass guard for notching with a good overall view.



Technical data

| | |
|-----------------------------------|---|
| Cutting capacity (90° notching) | 6 mm mild steel 4 mm stainless steel |
| Length of cut | 225 x 225 mm |
| Coping width | 25 mm |
| Coping depth | 100 mm |
| Power supply | 5 KVA |
| Length | 1350 mm |
| Width | 1100 mm |
| Height | 1400 mm |
| Height of table | 900 mm |
| Weight | 1100 kg |

