



EvoLine MiniPress

Punching
Forming
Profile Handling



simply better!



EvoLine



EvoLine 500 x 1000 with options: profile option, digital displays, cross laser

The hydraulic punching machines from the **EvoLine** series are designed for sheet metal, plate and profiles. The design is proven through the machine's flexibility and accuracy.

The machines of the **EvoLine** series have 28 tons (optional 40tons) punching pressure using the well-known Trumpf® tooling system and a stroke length of 90mm.

Features of the machine:

- Maintenance-free hydraulic drive
- Constant punching pressure
- Compact design
- Continuous stroke adjustment

The **EvoLine** earns its money from:

- Small and medium series
- Thin sheet up to 12.7mm max.



Mode of operation:

When the tool is set, the material positioned in the X and Y axes and the workpiece is moved against the stops. When the foot pedal is pressed the ram punches the hole.

Accessories for both machines:

EvoLine profile option:

With this option you can punch angles up to a height of 90mm with the extended length tooling.

This option contains the following construction:

- 90mm stroke length
- Second independent stroke adjustment
- 2-hand-operation for safely working without plexi guard
- Special hold down for angle parts
- Modification on the x-axis stop



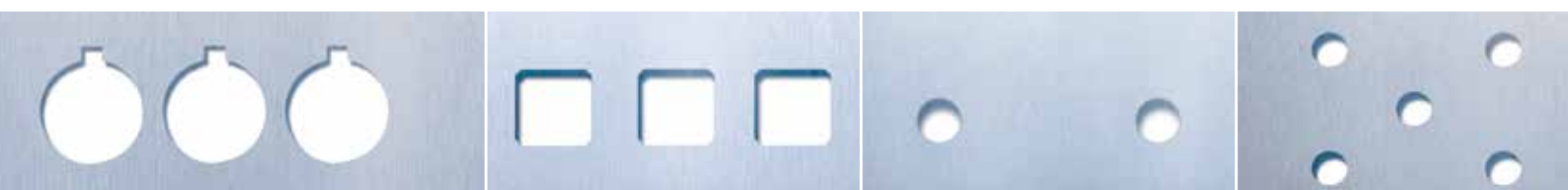
Adjustment unit



Stripper holder



Die holder size I and II





MiniPress



MiniPress 150 with optional substructure table

The hydraulic punching machine **MiniPress** is specially designed for the processing of small sheet parts. Despite its space saving design, the machine has a punching force of 28tons and is therefore able to punch steel up to a thickness of 12.7mm.

Equipped with a 90mm stroke cylinder, the machine is also capable of processing profiles.

With the well known Trumpf® system, it is also possible to punch any shape within 105mm

Features of the machine:

- Space-saving and compact
- Exceptionally long life of the punching tools
- Overload protection
- Best accessibility of the punching tool
- Set-up/single/continuous stroke

Tool change:

Die



Punch



The tool system:

The tool set consists of a punch, adjusting ring, stripper, and die and can be changed in approx. 15 seconds.

Any tool shape fitting within 105mm diameter can be used. The amount of regrind can be compensated through a simple stroke length adjustment.

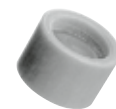
Either urethane or passive metal strippers can be used.



Punch



Adjustment rings



PU-stripper



Die seize- 1

Trumpf® standard tooling:

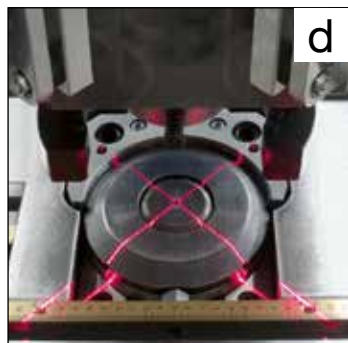
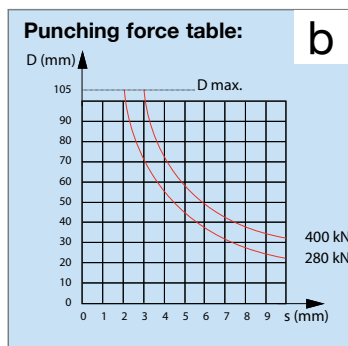
- Easy handling
- Low cost
- Punch installation directly into the punching head without adapters
- High durability
- Long regrind length



MiniPress

Work area	
MiniPress 150	150 x 150
MiniPress 300	300 x 150
Performance	
Max. sheet thickness	12,7mm
Max. hydraulic punching pressure	280 kN
Speed	
Max. stroke per minute	100 strokes / min
Tooling	
Trumpf® Tools	
Max. punching diameter	Ø 105mm resp. every form within 105mm / 74mm Optional 92 x 92mm
Tool change time	15 Sec. Man.
Punching accuracy	
With standard measuring scales	+ - 0,2mm
With digital readout	+ - 0,1mm
Space requirements and weight¹	
MiniPress 150	1051 x 853 x 1894mm
Weight	450 kg
MiniPress 300	1046 x 1003 x 1901mm
Weight	450 kg
Electrical values	
Electrical connection value	5 kVA
Hydraulic motor	4,0 / 5,5 kW
Required security	3 x 16 A
Hydraulic oil filling	20 Liter

¹ The exact values can be found in each specific layout plan



a) Mini stops:

By using spring loaded mini-stops that are easily set into the T-slots on the table, rows of holes can be quickly punched.

b) Punching force table:

To determine the required punching force.

c) Option: digital readout

A digital readout can be mounted to all models to a sure accuracy when positioning the stops. The system works with magnetic scales that allow an accuracy of +/- 0.1 mm.

d) Option: cross laser

For safe working, the cross laser enables the punching positions to be marked.

EvoLine

Work area	
EvoLine 300 x 500	370 x 700
EvoLine 500 x 1000	570 x 1200
EvoLine 750 x 1500	820 x 1700
Performance	
Max. sheet thickness	12,7mm
Max. hydraulic punching pressure	280 kN / 400 kN
Speed	
Max. stroke per minute	100 strokes / min
Tooling	
Trumpf® Tools	
Max. punching diameter	Ø 105mm resp. every form within 105mm / 74mm Optional 92 x 92mm
Tool change time	15 Sec. Man.
Accuracy of Punching	
With standard measuring scale	+ - 0,2mm
With digital readout	+ - 0,1mm
Space requirements and weight¹	
EvoLine 300	1520 x 940 x 1540mm
Weight	1800 kg
EvoLine 500	2400 x 1580 x 1540mm
Weight	2500 kg
EvoLine750	3400 x 1580 x 1600mm
Weight	3400 kg
Electrical values	
	28 / 40 T.
Electrical connection value	5 / 8 kVA
Hydraulic motor	4,0 / 5,5 kW
Required security	3 x 16 A / 3 x 16 A
Hydraulic oil filling	50 / 115 Liter

¹ The exact values can be found in each specific layout plan



BOSCHERT
GmbH+Co.KG
 79541 Lörrach / Germany
 Mattenstraße 1
 Telephone: +49 7621 9593-0
 Telefax: +49 7621 55184
 www.boschert.de
 info@boschert.de